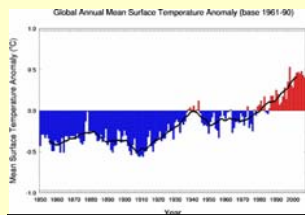
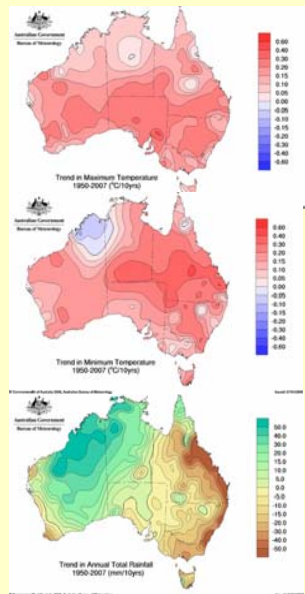


The Stock Routes Coalition for Protection of the Travelling Stock Route Networks in Queensland and New South Wales

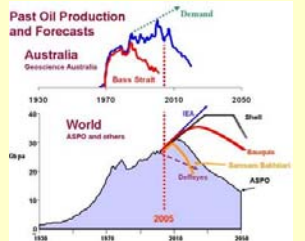
The challenge with climate change is to facilitate the natural, adaptive responses of native species across Australia. Adaptation to climate change means preparing for the unpredictable by providing corridors that cross climatic regions



Average temperatures are predicted to keep rising for the next 100 years



Recent climate change has been uneven and unpredictable



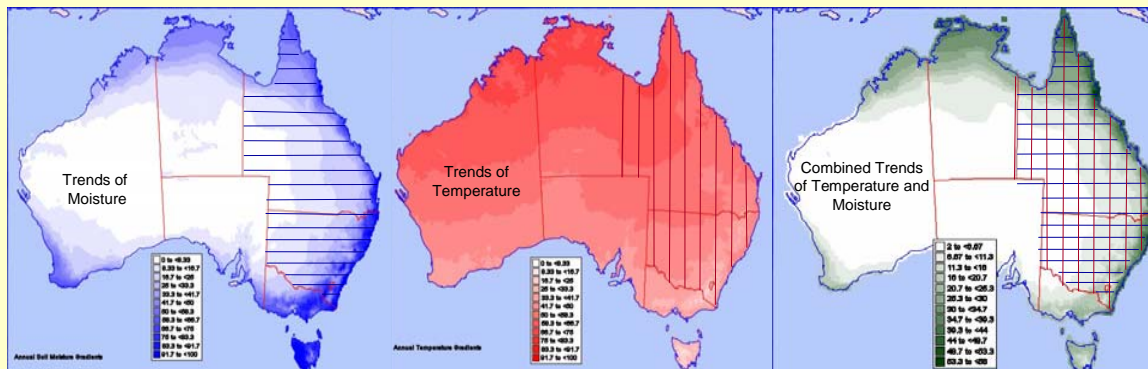
Peak Oil and Carbon Trading will increase costs of moving livestock by trucks and trains



Aborigines made fish traps on the waterholes linked by stock routes



The stock route networks in Queensland and NSW will support livestock movements by droving in future



Objectives of the Stock Route Coalition

The Governments of New South Wales and Queensland are currently examining the future of the stock routes. **We strongly oppose any** proposals to sell or lease any stock routes or make currently unused routes available for agistment without enforceable conditions that sustain the native vegetation.

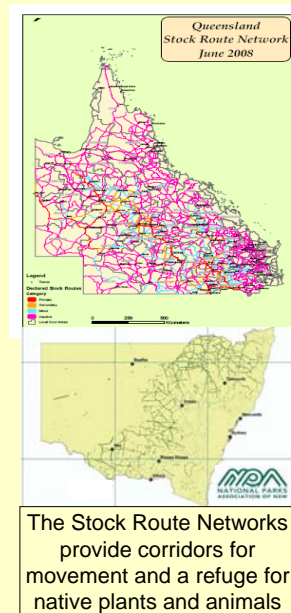
SHORT TERM OBJECTIVE:

To have the New South Wales and Queensland governments put an immediate freeze on disposal or lease of any segments of the stock routes until they have taken account of their potential benefits for biodiversity under climate change.

OBJECTIVES:

To have the New South Wales and Queensland governments:-

1. Recognise and embed the *conservation* and *cultural heritage* values of the existing stock route networks in policy and protect them in the day-to-day management of the stock routes,
2. Create by legislation, Protected Corridors for Travelling Stock and Biodiversity to encompass the entire TSRs and SRN of each state respectively and
3. Both governments to contribute the necessary ongoing financial support from environmental budgetary sources reflecting the public interest conservation component and for enhancement of the stock routes networks through the Regional Funding Component of the Australian Government's NRM Initiative.



The Stock Route Networks provide corridors for movement and a refuge for native plants and animals



Stock routes and reserves (green lines & squares) connect remnant native vegetation in fragmented inland landscapes



Members of the Coalition